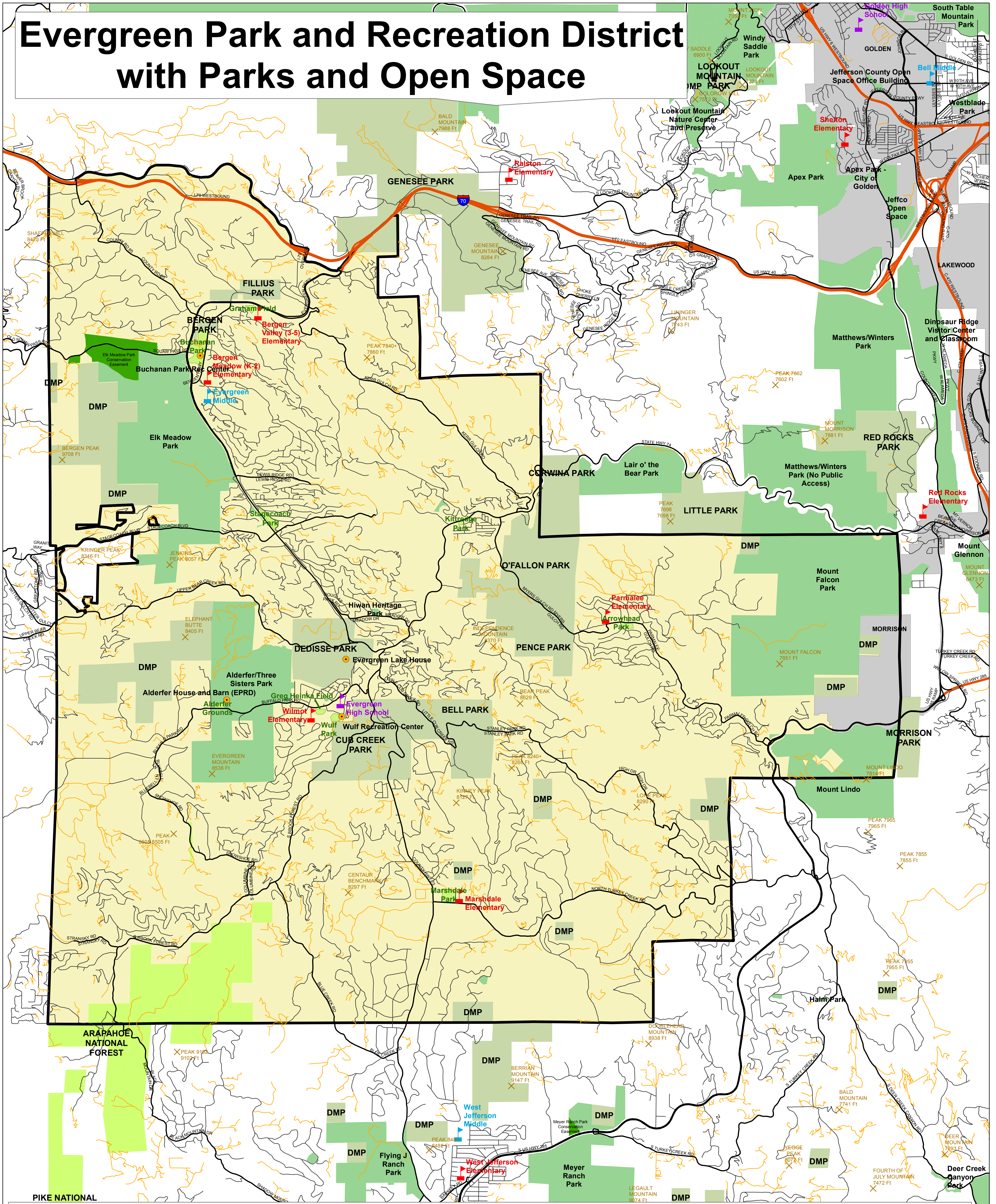
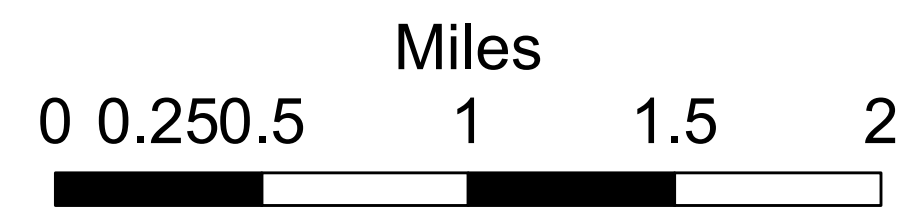


# Evergreen Park and Recreation District with Parks and Open Space



- |  |                    |                               |
|--|--------------------|-------------------------------|
| Evergreen Park and Recreation District | <b>Street</b>      | City                          |
| EPRD Facility                          | Highway            | EPRD Managed Parks and Fields |
| Mountain Summit                        | Principal Arterial | Public Open Space             |
| High School                            | Arterial           | Private Open Space            |
| Middle School                          | Collector          | Denver Mountain Park          |
| Elementary School                      | Residential        | National Forest               |
|  | Unnamed Road       |                               |

**JEFFERSON**  
COUNTY COLORADO



**DISCLAIMER**  
Jefferson County offers this service for informational purposes only and assumes no liability whatsoever associated with the use or misuse of this data. This data is provided "as is". Jefferson County disclaims all representations and warranties expressed or implied, including without limitation all representations and warranties as to the completeness, accuracy, correctness, merchantability and fitness for a particular purpose of any data and any and all warranties of title related thereto.